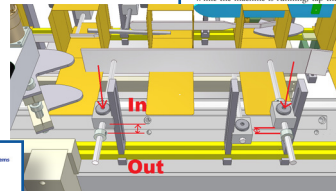
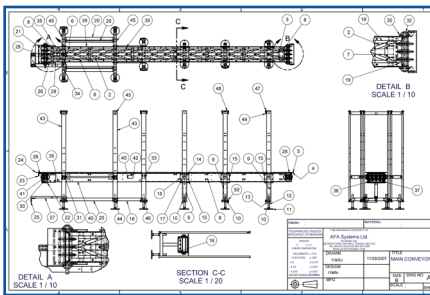




## Training Services

- » PMMI Certified Trainers
- » On-site training or training at AFA's location
- » Professional training manuals (standard or customized)
- » Formal Training Proposals
- » Coordination with you internal trainers
- » Follow up and training refreshment
- » Job aids and Performance checks
- » Bilingual capabilities
- » Needs assessment



**Operating procedure**

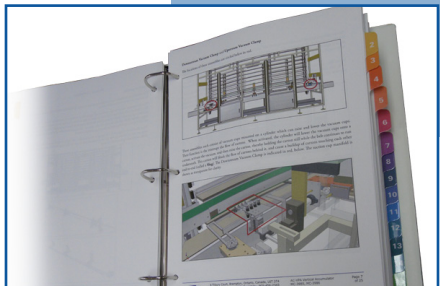
Walk around the machine and visually inspect it, clearing it of any product, cases, personnel, tools, or anything else that might impede its operation. Make sure that all of the guards are in place and closed and that none are bypassed or removed. Ensure that the Manual Mode selector switch is set to OFF.

Clear any faults that remain active in the machine. See the **Troubleshooting** section for more information.

To start the machine, press the green Cycle Start pushbutton for three seconds. To stop the machine, press the red Cycle Stop button.

**Purging**  
Often it is desired to purge the machine. While the machine is running, tap the Purge switch. The machine will stop for six seconds. This will purge any cases or packs that remain. Any cases discharged, but the feeder will produce.

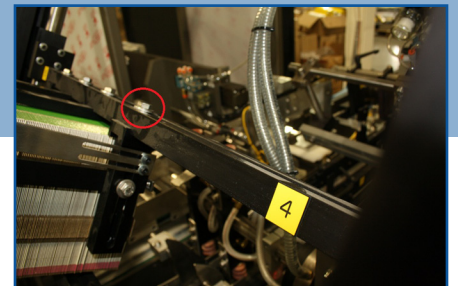
Danville, Canada L6T 3T4  
Telephone: 905-456-2343  
Page 13



Professional training manuals are helpful for locating the correct service part, correcting machine faults, and improving overall operating efficiency.



AFA Trainer demonstrating a changeover procedure. Reducing changeover time offers numerous benefits including lower costs and increased output.



Job aids are useful for operators who are seeking quick reference guide for routine procedures such as changeover, cleaning, and startup/shutdown.